

Getting Started with Your LEARN Online Subscription for Users



Table of Contents

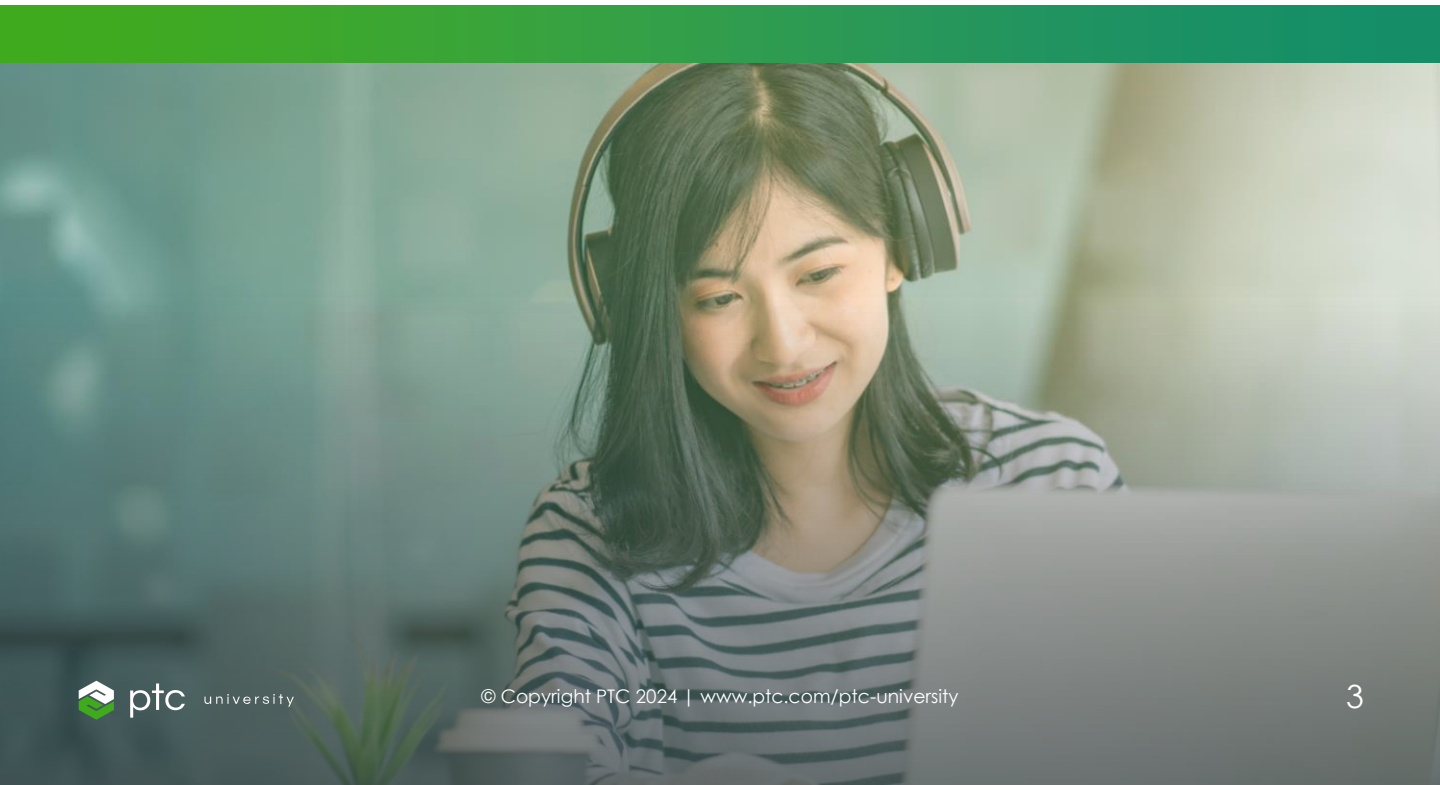
Introduction	3
Getting Started	4
How to Prepare for Class	5
Getting the Most Out of Your LEARN Subscription	6-7
Quick Summary	8
Contact Us	9

Introduction

We believe in your ability to change the world. It is our mission at PTC University to guide you along the way through best-in-class learning experiences. Our LEARN Online Subscription provides you with unlimited access to live, virtual, instructor-led LEARN sessions. Each session is three hours, and capacity limits on classes ensure you have unfettered access to your instructor. Choose a class time that works for your schedule and retake any course offered to refresh and solidify your skills. Our world-class instructors will lead you on a collaborative and engaging learning journey designed to help you retain knowledge and drive your success. We look forward to seeing you in the classroom!



Scott Barkman
Vice President, PTC University



Getting Started

It's incredibly easy to get started with your LEARN Online subscription. You can take advantage of unlimited learning!



Create a PTC Account

These are the credentials you will use to sign in to Learning Connector. You will need your Sales Order Number and Customer Number. Please reach out to your organization's site admin if you need to locate this information.

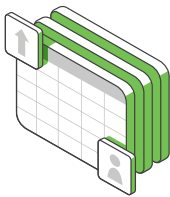
[Click here to view our helpful video on how to create your PTC Account.](#)



Signing in to Learning Connector

You can verify your LEARN Online access and browse by product category for all half-day classes and certifications available to you within Learning Connector.

[Click here to access the job aid for signing in to Learning Connector.](#)



Search and Enroll in a Class

Browse the various courses and enroll in a class that works best with your availability. On class day, you will access your materials and links at class.ptcu.com.

[Click here to access the job aid for Search and Enroll in a Session.](#)

Need help? Reach out to trainingcentral@ptc.com.

How to Prepare for Class



Training Guide

Training guides are available within 24 hours before the start of the class and access continues for 12 months. Training guides for already completed classes can be accessed through class.ptcu.com.

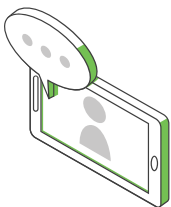
[Review instructions to access training guides here.](#)



Training Computers

All students have access to training computer virtual machines during LEARN classes for hands-on activities. These are available for students 30 minutes before class time.

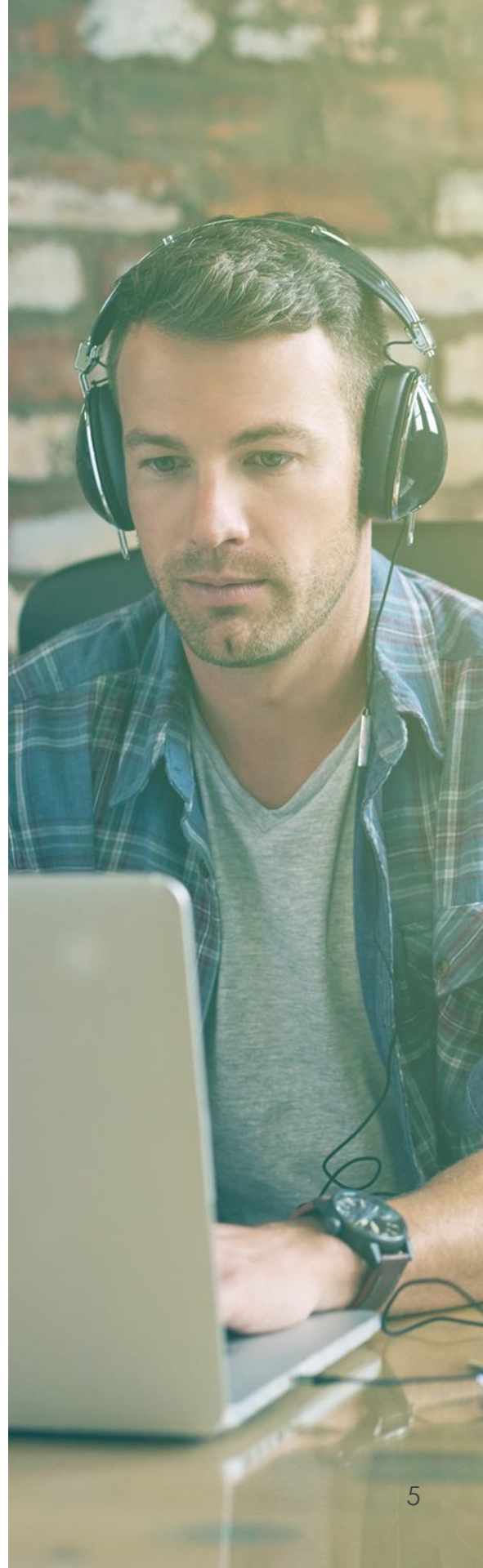
[Review system requirements for virtual machines here.](#)



Online Classroom

Microsoft Teams is the platform we use to deliver LEARN classes.

[Review system requirements and test your connection here.](#)



Getting the Most Out of Your LEARN Subscription

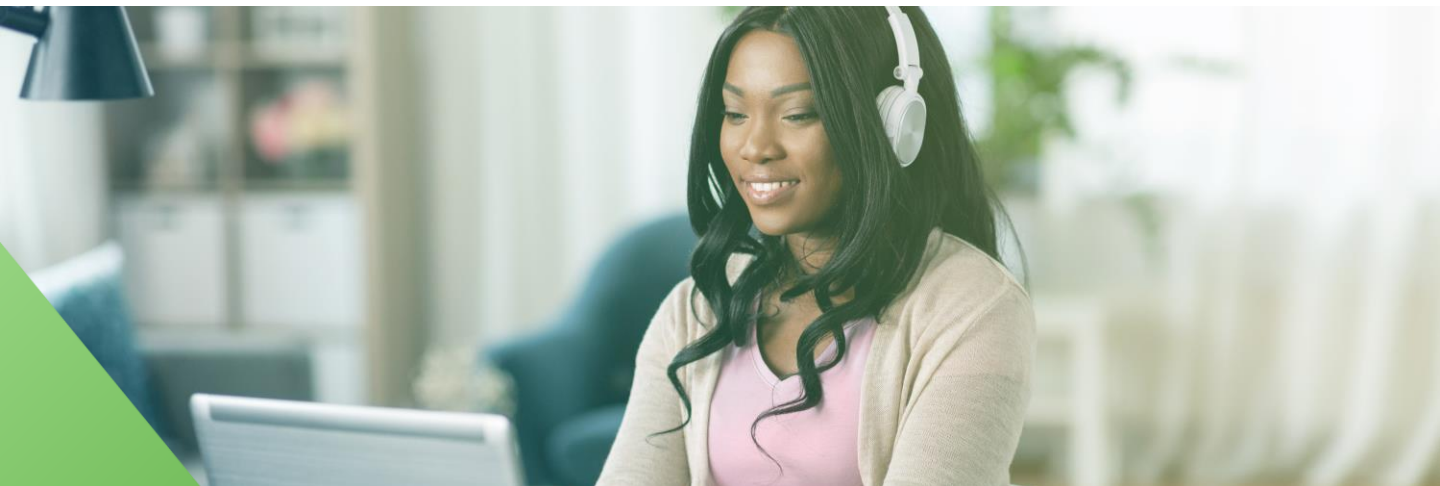
Your Journey

The LEARN Online Subscription provides you the ability to personalize your learning journey with instructor-led, self-guided, and eLearning courses available to you. We offer classes five days a week with start times of 3:00 AM EST to 11:00 PM EST. With our dynamic scheduling, you may attend classes that interest you when you are available.

Enroll, Unenroll, and Retake Courses

You may enroll in all instructor-led or self-guided courses through Training Central by [searching and enrolling](#) in classes. You may withdraw from classes if you can no longer attend by following the guide [here](#). With a LEARN Online subscription, you may retake classes as often as you need. By retaking a class, you agree to actively participate in the course with the instructor and follow along with the exercises.

Check out our [Find a Class](#) page and click Enroll Today when you find a class you would like to attend.



Getting the Most Out of Your LEARN Subscription

Obtain Your PTC University Certification

PTC University is now offering practical exams to validate a student's proficiency in our software. Our certifications have two levels: Associate and Professional. You have two attempts to pass the certification exam. Each certification has an abstract on the content that will be covered. We highly suggest you complete the recommended courses before attempting the certification exam. You may enroll in a certification by following [these steps](#).

For additional information, please click [here](#) to learn more about the certification exams and view our Exam FAQ [here](#).

What Are the Benefits of Getting Certified?

PTC University is the only reputable source for PTC product certifications. Our exams are designed by subject matter experts and always reflect the latest features and functions of PTC software. Certifications elevate students to the next level of expertise in PTC software. Once a student has earned a PTC University Certification, they'll join an elite community of PTC Power Users. Students can share a digital credential with their social media network as concrete evidence of their capability in PTC software. Certifications are valid for two years upon completion.



Quick Summary



Learner Checklist

- [Confirm Access to Learning Connector](#)
- [Search and Enroll in Courses](#)
- [Review System Requirements](#)
- [Attend Class](#)
- [Take Survey](#)
- [Get Certified](#)

Contact Us

To review more information, check out [our FAQ page](#) which houses helpful job aids and videos.



PTC Headquarters

121 Seaport Blvd, Suite 1700
Boston, MA 02210 USA

Website

www.ptc.com/ptc-university

Email

Trainingcentral@ptc.com